

Deans . . . New Ph.D. Programs . . .

trend, enrollment in the **GRADUATE SCHOOL OF ARTS AND SCIENCES** was this year predominantly full-time. This is an encouraging step toward the School's further development as a resident graduate school.

New Ph.D. programs in architecture and geology have been set up. In addition to the Ph.D. program in architecture, the **GRADUATE SCHOOL OF FINE ARTS** has adopted a three-year program leading to a certificate in specialized areas of city planning. This is in addition to the master's degree currently offered at the end of two years of graduate study.

The growth of education for city planning is largely a post-war phenomenon. A recent article in *Business Week* reported that the University of Pennsylvania heads the list of America's recognized city planning programs with an enrollment of 85 graduate students.

Further recognition of Pennsylvania's leadership in planning is found in the

selection this past summer of the University as one of ten American universities to receive grants of \$100,000 from the Richard King Mellon Charitable Trusts for fellowships and faculty salary supplements in city planning and urban renewal.

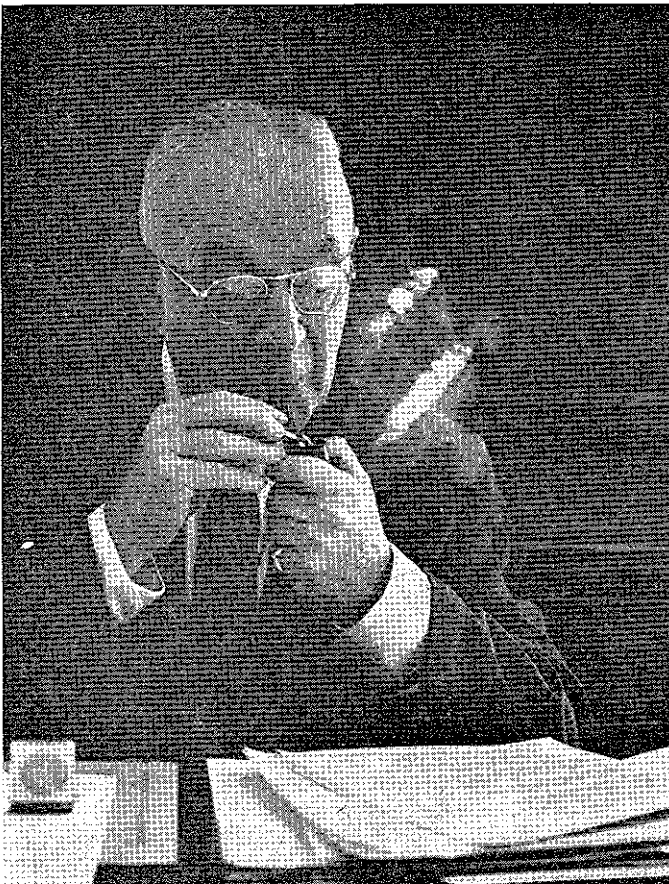
Significant developments in **THE ANNENBERG SCHOOL OF COMMUNICATIONS** included the appointment of Dr. George Gerbner of the Institute of Communications Research of the University of Illinois as dean and the establishment of a new two-year program in communications management in cooperation with the Wharton School. This program will lead to the degree of master of arts in communications management. Two new fellowships in communications management were established by American Broadcasting-Paramount Theatres, Inc., coincident with the announcement of the new program.

A further step toward making the

GRADUATE SCHOOL OF EDUCATION a distinguished center for graduate studies in education was taken with the appointment of one of the University's senior professors, Dr. Morris S. Viteles, as dean. Dr. Viteles, internationally known for his work in industrial psychology and vocational guidance, had served as acting dean of the School for the past year.

As a result of a major revision of the **LAW SCHOOL'S** curriculum, the choice of elective subjects is less stringent than in the past. Enrollment has increased and another steep rise—25 per cent over the previous year—was noted last spring in admission applications, despite rising admission standards. The five institutions which are the largest sources of current applications for admission are, in order, Pennsylvania, Yale, Harvard, Cornell, and Dartmouth.

The Law School has become increasingly a national institution. At the



Mary Ellen Mark

Dr. Morris S. Viteles, world famous psychologist who was recently appointed dean of the Graduate School of Education.



New dean of Annenberg School, Dr. George Gerbner, came to the University last summer from University of Illinois.