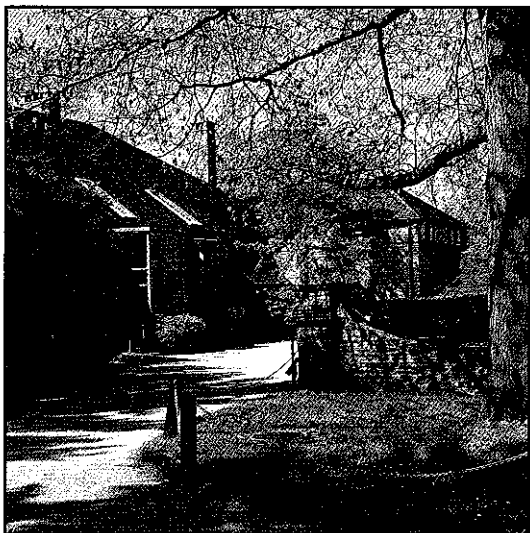


# SugarLoaf

---



## CONFERENCE CENTER

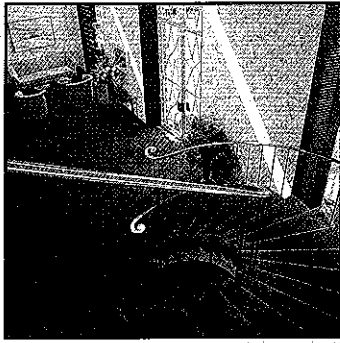
*Where the classic meets the modern  
in distinctive  
conference environments*

**ALBERT M. GREENFIELD  
EXECUTIVE CONFERENCE CENTER  
OF TEMPLE UNIVERSITY**

9230 Germantown Avenue  
Philadelphia, PA 19118  
215-242-9100



Member  
International Association  
of Conference Centers



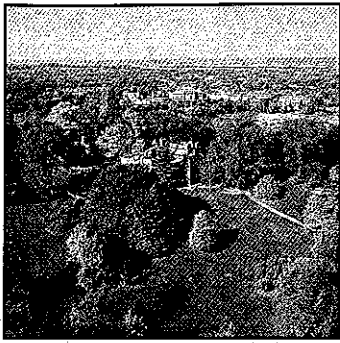
The Albert M. Greenfield House at SugarLoaf, an architectural masterpiece of Edward Durrell Stone, is a contemporary design, blending the esthetics of both the classic and modern world. The largest of the conference facilities, the Greenfield House contains seven meeting rooms, lounge and library, and can accommodate several groups simultaneously in complete privacy. The dining room, overlooking the lawn and terrace areas, is proud of its reputation for fine food, warm hospitality and precise service. The Greenfield Center has thirty-two large double rooms and two spacious suites. Banquets and receptions are also available for up to two hundred people.



Wyncliffe, a Victorian Manor House located on the SugarLoaf Estate, was built in 1875 by Joseph F. Page. The house remained in private ownership until it was incorporated with the SugarLoaf Estate in 1958 by Albert M. Greenfield and became part of the Greenfield Foundation gift to Temple. The period decor enhances the turn-of-the-century appeal of Wyncliffe. Surrounded by sweeping lawns, its most outstanding feature is a wrap-around porch with a breathtaking panoramic view of the Whitmarsh Valley from one of the highest points in the city. Restored in the Victorian fashion, the building houses 1500 square feet of meeting space in three conference rooms and accommodates groups up to seventy and banquets for one hundred.

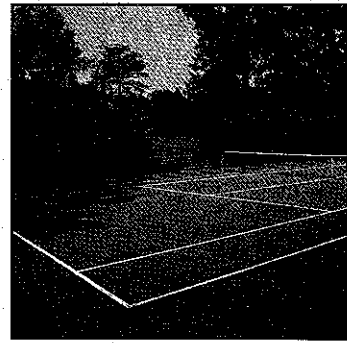


SUGARLOAF • CONFERENCE



**T**

he SugarLoaf Conference Center located in Chestnut Hill is a thirty-two acre property combining both the Greenfield and Wyncliffe estates. The full property is totally self-contained featuring the services of food, lodging, tennis, swimming, exercise equipment and hiking. Conference facilitators will enjoy confidence in planning meeting agenda. The rooms come fully equipped with standard audio-visual equipment, ergonomically satisfying chairs and magnificent vistas. Parking is ample and complimentary. The pristine SugarLoaf Conference Center property has merged the elegance of estate living with the modern necessities of today's business day.



**R**

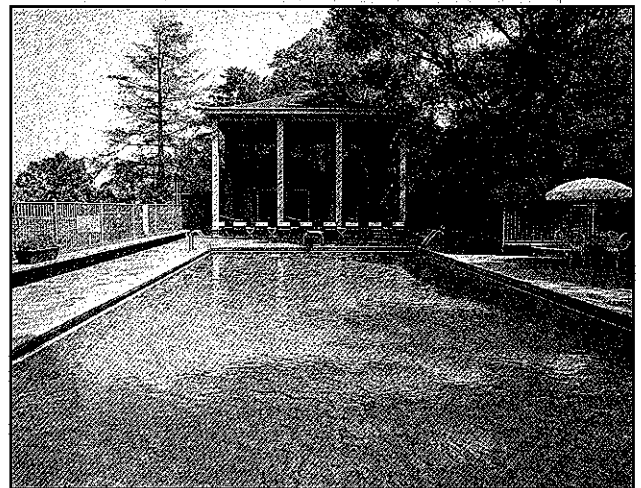
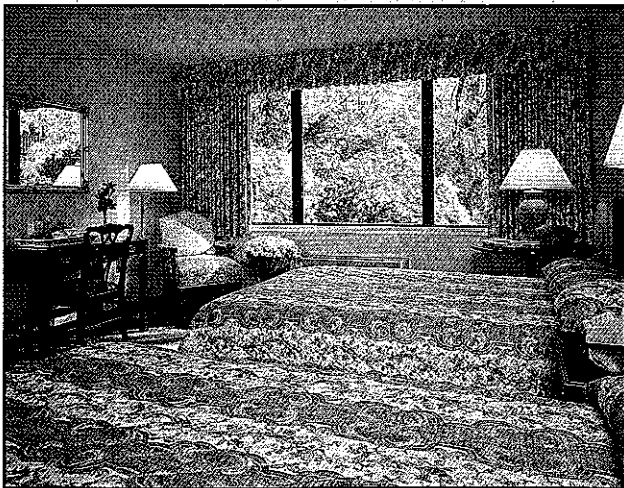
ecreation. Temple's Conference Centers each provide an exciting array of recreational opportunities. Arrangements can be made at nearby facilities for golf, horseback riding, sightseeing trips to Historic Philadelphia, Valley Forge and Atlantic City.

**NEARBY FAIRMOUNT PARK**

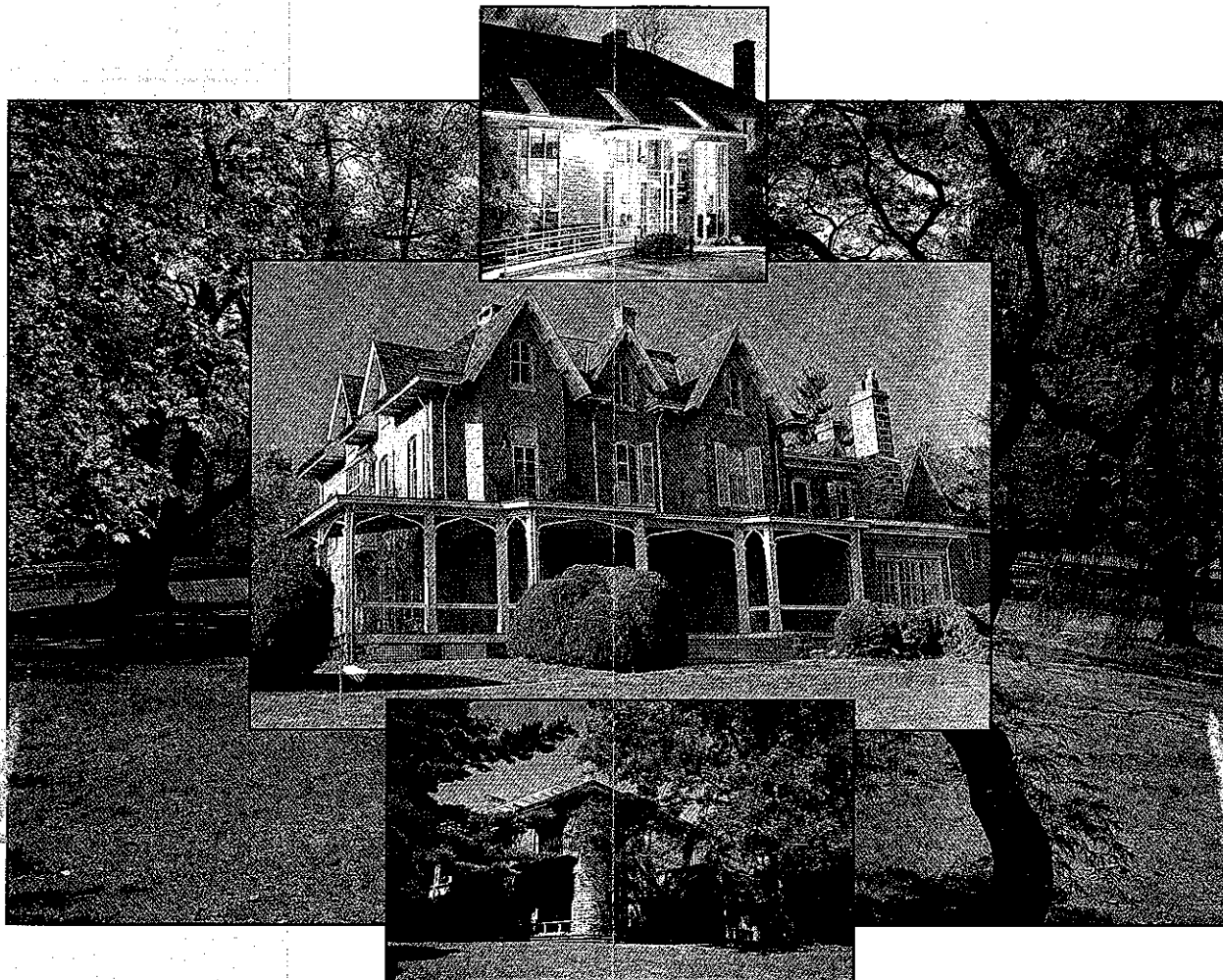
The best jogging trail in the State of Pennsylvania. Forbidden Drive through Fairmount Park, a five mile lighted, protected, well maintained trail along the Wissahickon Creek with exercise stations. Forbidden Drive is directly accessible via SugarLoaf Nature Trail.

**SUGARLOAF**

Outdoor swimming pool • Tennis court  
Game room • Ping-pong • Billiards  
Volleyball • Fitness center  
Barbeque • Nature trail



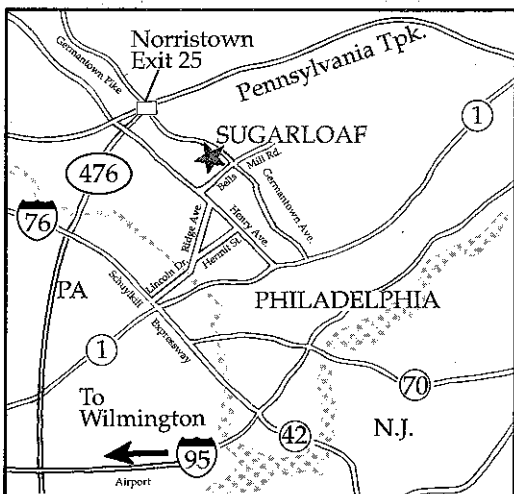
**L O D G I N G • R E C R E A T I O N**



The Temple University Conference Centers,  
comprised of converted  
historic estates in Chestnut Hill  
on forty beautifully landscaped acres,  
are dedicated to a concept of lifelong learning  
and continuing education for adults.  
Temple's commitment to these goals is  
demonstrated by the preservation and enhancement  
of the natural beauty surrounding the Centers  
and the management of modern  
and fully equipped conference facilities  
that are available to host  
professional and corporate groups worldwide.

SUGARLOAF

• A FACILITY OF TEMPLE UNIVERSITY •



Air, train and bus service from all points is available to Philadelphia. Ground transportation arrangements can be coordinated by the Conference Center on request. Rail service is available at local Chestnut Hill station. Driving directions as follows:

#### FROM THE PENNSYLVANIA TURNPIKE

To Norristown exit #25. Take Germantown Pike to Philadelphia. Follow Germantown Pike approximately 4.5 mi. to Bells Mill Road and Germantown Avenue. Driveway to Center is on right 25 ft. before intersection.

#### FROM THE NEW JERSEY TURNPIKE

To Pennsylvania Turnpike. Follow directions above.

#### FROM SCHUYLKILL EXPRESSWAY (ROUTE 76)

Exit at Lincoln Drive. Bear right to Ridge West—Follow to top of hill (four lights)—cross straight. This is Hermit St. Proceed on Hermit  $\frac{1}{4}$  mile to Henry Ave. Turn left on Henry/Ridge and proceed 3.8 miles to Bells Mill. Turn right onto Bells Mill, SugarLoaf is at intersection of Bells Mill and Germantown.

#### FROM THE AIRPORT

Exit Airport—Follow 95 South to 476 North (Plymouth Meeting). Remain on 476 North to Exit 8 (Germantown Ave.—East/Plymouth Meeting). At the first light make a right onto Germantown Avenue. Continue East 4 miles to Bells Mill Road. SugarLoaf is on the righthand corner of Bells Mill and Germantown Avenue.

#### FROM 309 EXPRESSWAY

Exit at Papermill Road. Follow to the intersection of Stenton Avenue and Bethlehem Pike. Go straight through the intersection. Go around small curve to the street light (Hillcrest Road). Make a left. Follow to next light (Germantown Avenue). Make a left. Follow Germantown Avenue. Make a right into our driveway before the light at Bells Mill Road.



9230 Germantown Avenue • Philadelphia, PA 19118  
Phone: (215) 242-9100 • FAX: (215) 242-8362